

2006 Census

	Total	Nursing	Residential
2006 Total	32,301 *	19,546 (62%)	12,001 (38%)
BUPA 2006	17,676	13,773 (78%)	3,903 (22%)
NCF 2006	7,383	657 (9%)	6,726 (91%)
RNHA 2006	5,241	4,628 (88%)	613 (12%)
CRHAG 2006	949	168 (18%)	781 (82%)
BUPA 2003	15,287	11,335 (74%)	3,894 (26%)

* Total includes returns which could not be classified under these companies

www.ccc-ltc.org.uk

2006 Census

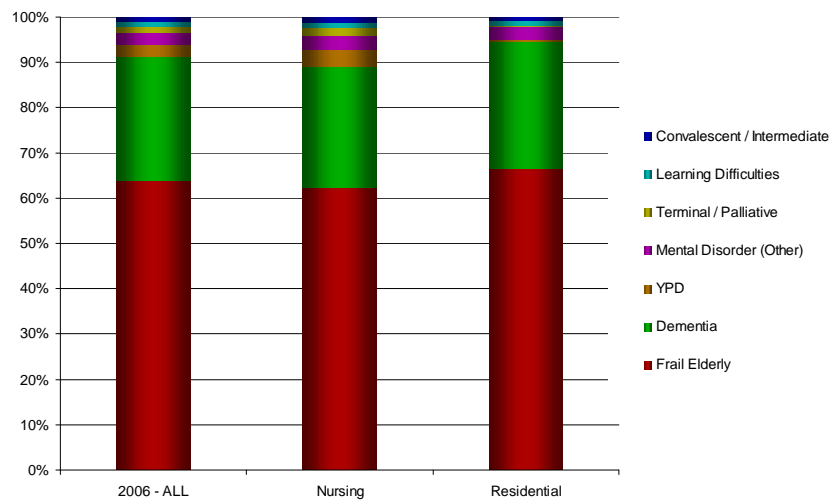
- 751 homes responded
- 32,301 residents returned out of population of 40,843
- a return of 79%
- Average age 83.6 years
- 93.7% of residents in long term care
- 71% state funded, 29% self funded

www.ccc-ltc.org.uk

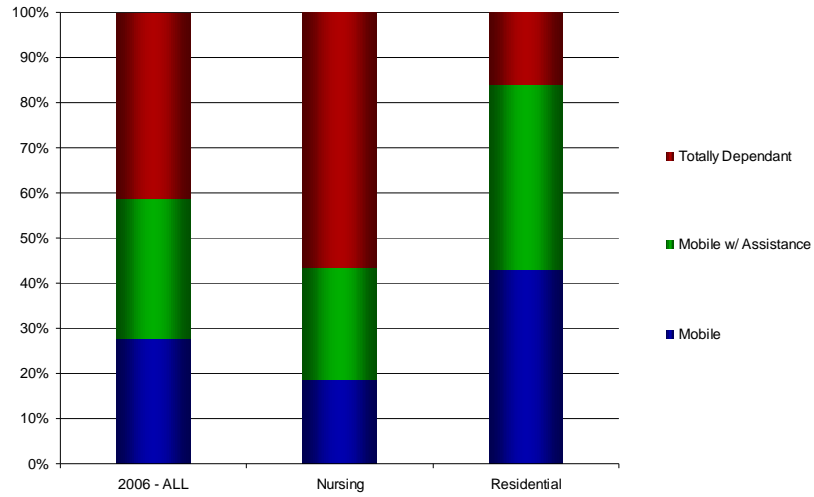
2006 Census

- 72% immobile or reliant on assistance
- 62% confused or forgetful
- 86% had one or two diagnoses driving need for care
- 11% no clinical driver for care
- 54% care related to dementia, stroke or Parkinsonism
- 24% confused, immobile and incontinent

Care category

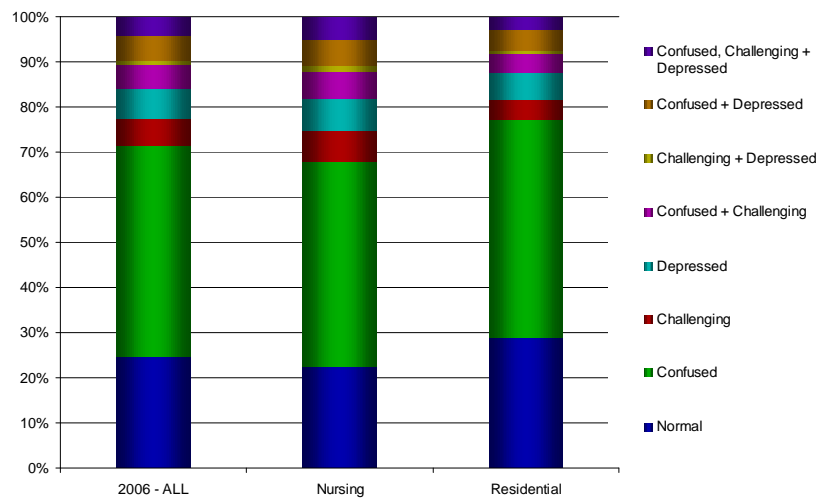


Mobility



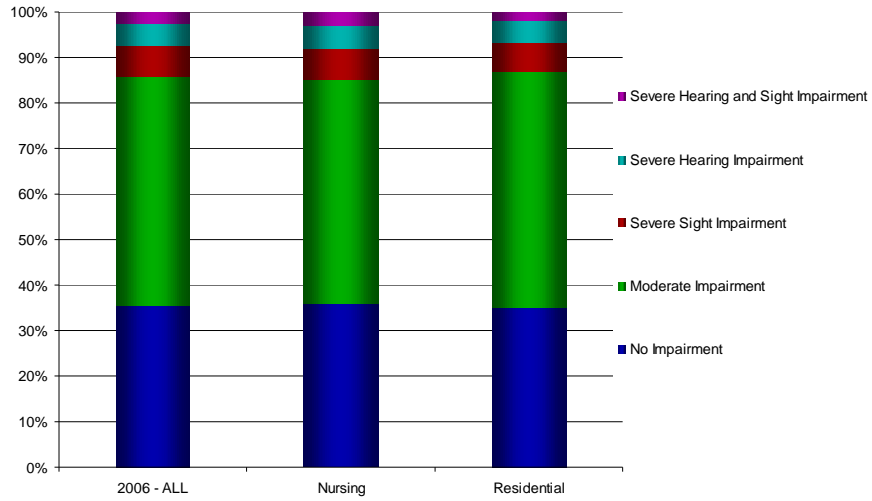
www.ccc-ltc.org.uk

Mental state



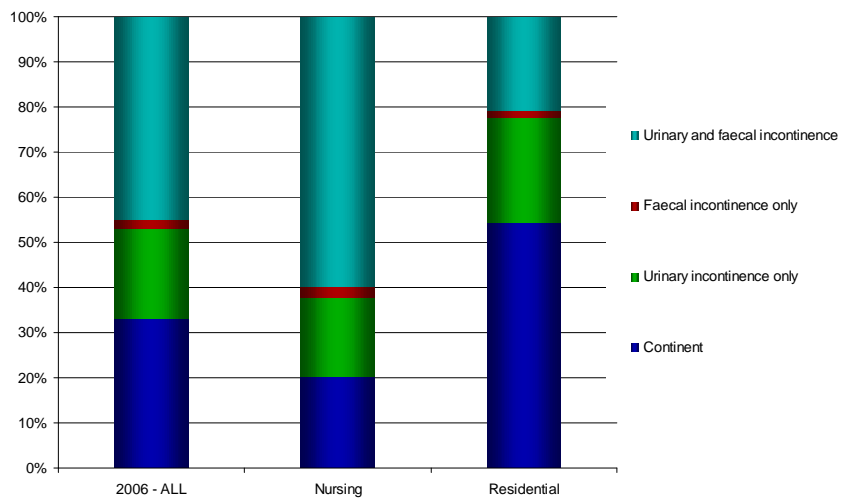
www.ccc-ltc.org.uk

Senses



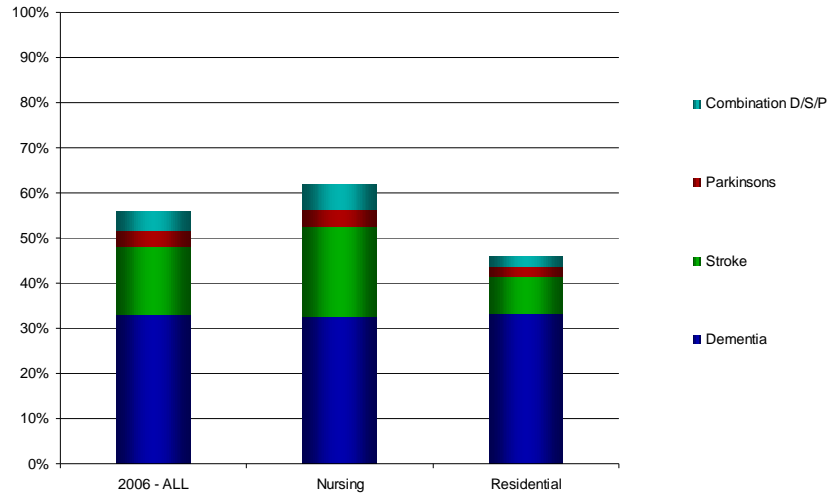
www.ccc-ltc.org.uk

Continence



www.ccc-ltc.org.uk

Dementia, stroke and Parkinson's



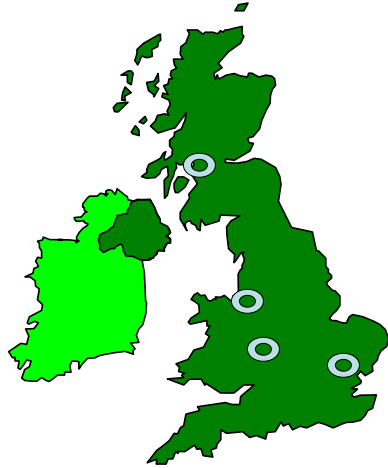
www.ccc-ltc.org.uk

Like for like comparison - change since 2003?

- Analysis shows that when we look only at the homes which were involved in the 2003 census, and compare their results from then and now, there is very little or no change in the results.

www.ccc-ltc.org.uk

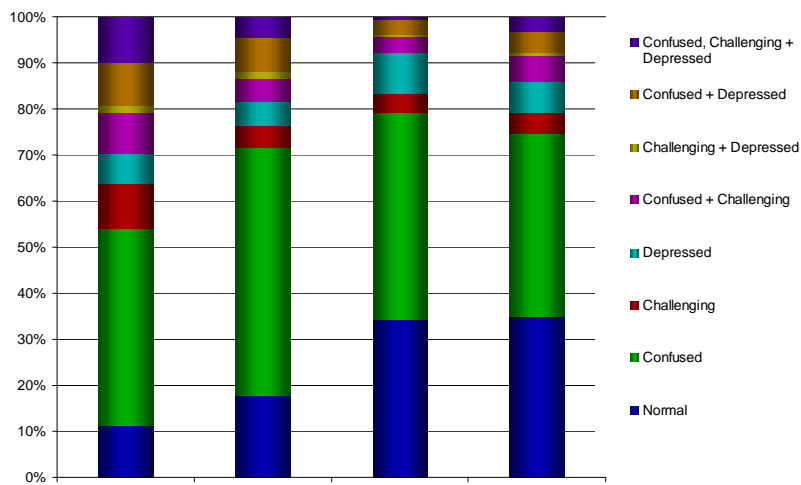
2006 Census - Is there a postcode lottery?



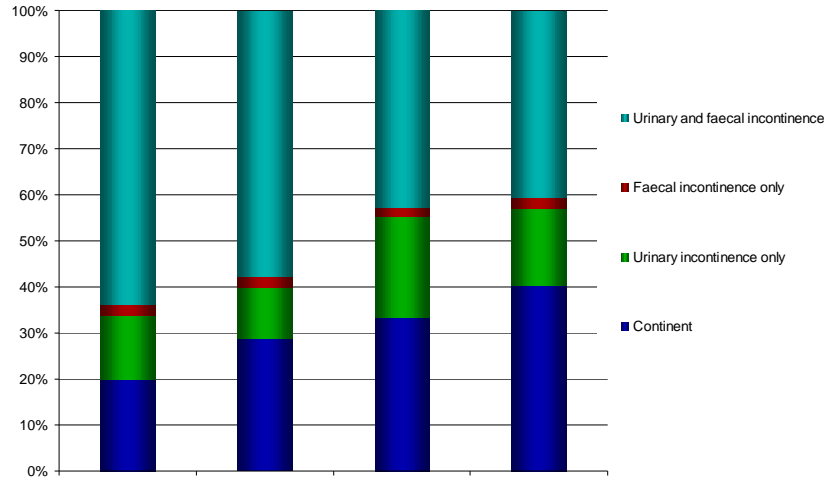
Comparing:

- Glasgow (G)
- Liverpool (L)
- Birmingham (B)
- Kingston (KT)

Mental state by area

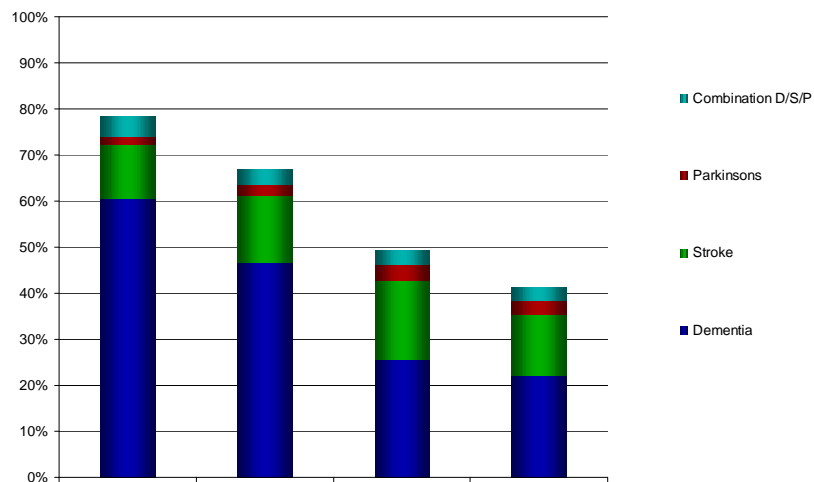


Continence by area



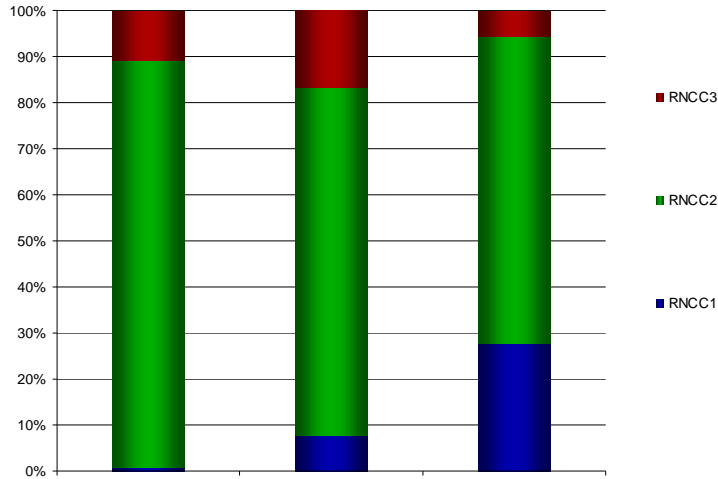
www.ccc-ltc.org.uk

Dementia, stroke and Parkinson's by area



www.ccc-ltc.org.uk

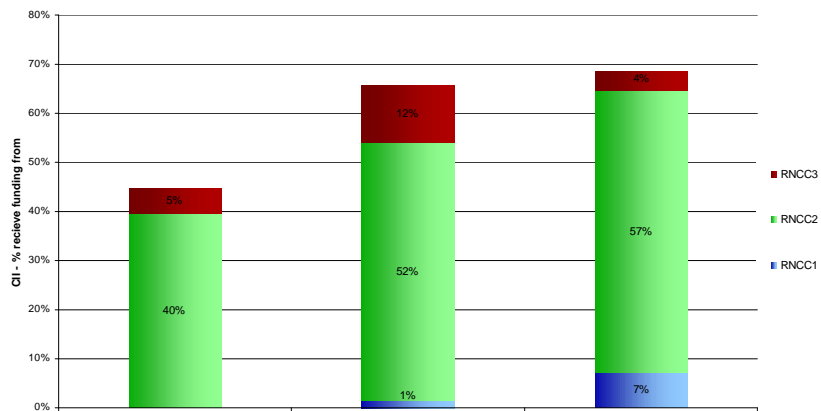
RNCC by area



www.ccc-ltc.org.uk

Residents who are Confused, Immobile and Incontinent - percentage who receive RNCC funding, by city

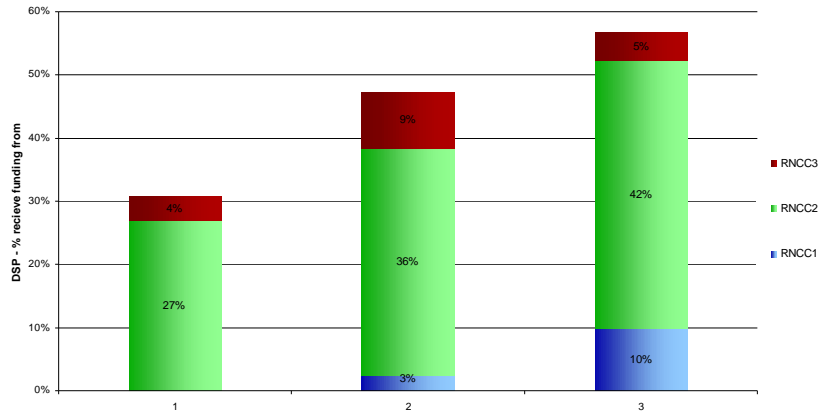
Confused, Immobile and Incontinent - Funding Stream (England only)



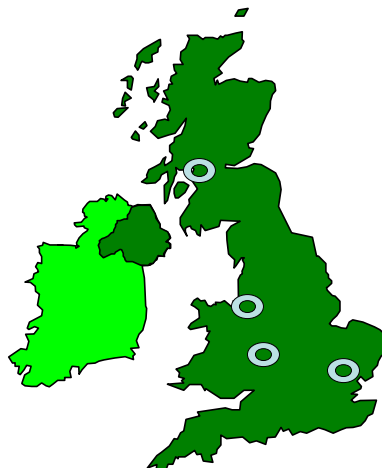
www.ccc-ltc.org.uk

Residents admitted due to Dementia, Stroke or Parkinson’s, - percentage who receive RNCC funding, by city

Dementia, stroke and/or Parkinson's - Funding Stream (England only)



Is there a postcode lottery?



2006 Census - Some matters for consideration

- The Census findings confirm a population of significantly dependent frail elders in care homes largely as a consequence of chronic disease, is the construct of care fit for their needs?
- Policy and funding for eligibility and defining responsibilities of health and care services are key, do they recognise the needs?
- Postcode variation is apparent
- What needs to be done?